



FB

青铜卷制轴套 BRONZE WRAPPED BUSHING

产品介绍






Product introduction

该产品以优质低碳钢板为基体，表面轧制菱形或油穴，油穴内埋入特殊的固体润滑剂，它有良好的润滑性和抗磨损性，能在无油或少油条件下工作，特别适用于高温，水溶液浸润或其他无油加油或加油困难场合。

It is made of high quality low-carbon steel, and the surface is rolled to diamond or round oil pockets. The special lubricant is embedded in the pockets. It has good lubricating and corrosion resistance property, it can work in the condition of little of oil or none of oil. It is particularly applied to high temperature, water solution and the occasions where cannot be added oil.

使用参数

The use of parameters

	FB090 青铜卷制轴套 Bronze Wrapped Bushing	FB091 黄铜卷制轴套 Copper Wrapped Bushing	FB092 青铜布孔轴套 Bronze Wrapped Bushing	FB094 青铜布孔轴套带密封圈 Bronze Wrapped Bushing with Seals	FB09G 青铜嵌石墨卷制轴套 Bronze +Graphite Wrapped Bushing
参数 Parameters					
密度 Density	8.9g/cm ³	8.4g/cm ³	8.9g/cm ³	8.9g/cm ³	8.3g/cm ³
抗压强度 Pressure resistance strength	470N/mm ²	440N/mm ²	470N/mm ²	470N/mm ²	470N/mm ²
导热系数 Coefficient of heat conduction	60W/m.k	71W/m.k	60W/m.k	60W/m.k	58W/m.k
线膨胀系数 Linear expansion coefficient	18.5 × 10 ⁻⁶ /K	19.2 × 10 ⁻⁶ /K	18.5 × 10 ⁻⁶ /K	18.5 × 10 ⁻⁶ /K	18.5 × 10 ⁻⁶ /K
硬度 Hardness	90~120 HB	80~110 HB	90~120 HB	90~120 HB	90~120 HB
延伸率 Elongation	55%	30%	55%	55%	55%
材料名称 Alloy material	CuSn8P	CuZn31Si	CuSn8P	CuSn8P	CuSn8P
其它可选材料 Other material	CuSn6.5P		CuSn6.5P	CuSn6.5P	CuSn6.5P

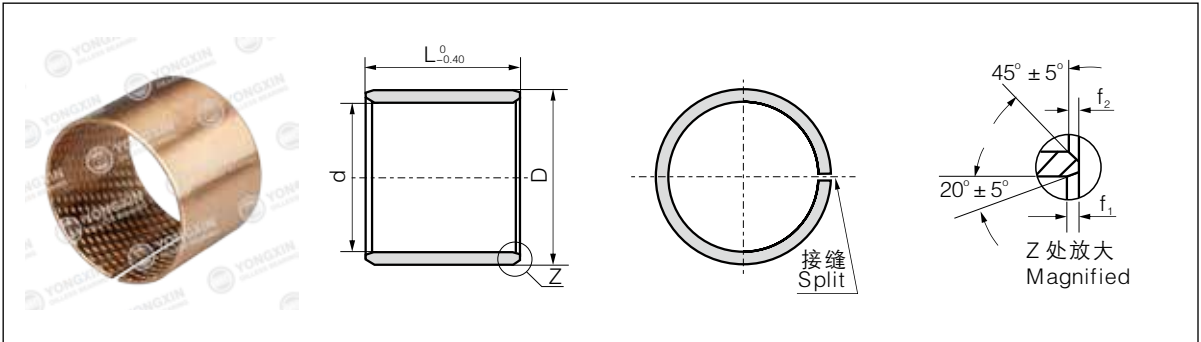
应用举例

Application case

产品主要应用于起重机械、建筑机械、汽车、拖拉机行业、机床工业及采矿机械。

Products are mainly used in lifting machinery, construction machinery, automobile, tractor industry, machine tool industry and mining machinery.

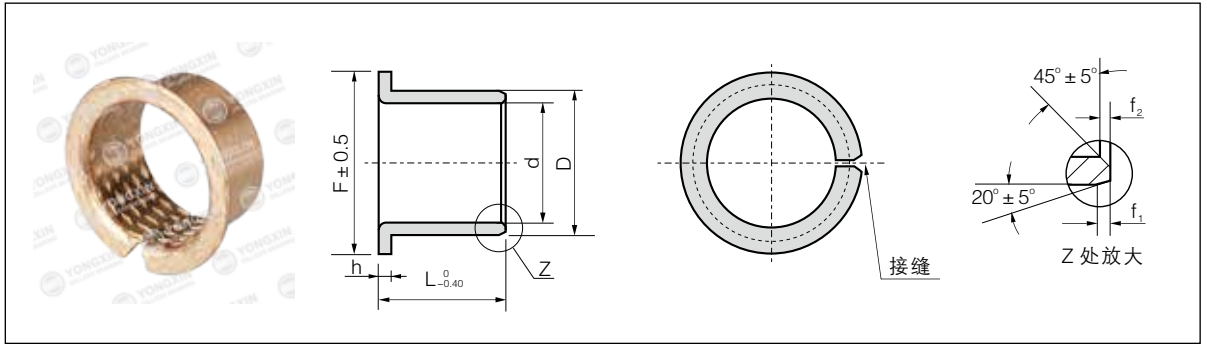
FB 青铜卷制轴套
FB Bronze Wrapped Bushing



单位Unit: mm

压入座孔后的 内径 I.D. after fixed		外径 O.D.		f1	f2	L															
						10	15	20	25	30	35	40	50	60	70	80	90	100			
10		12		0.5	0.3	●	●	●													
12		14		0.5	0.3	●	●	●													
14	+0.043	16	+0.065	0.5	0.3	●	●	●	●												
15	0	17	+0.030	0.5	0.3	●	●	●	●												
16		18		0.5	0.3	●	●	●	●												
18		20		0.5	0.3	●	●	●	●												
20		23		0.8	0.4	●	●	●	●												
22		25		0.8	0.4	●	●	●	●												
24	+0.052	27	+0.075	0.8	0.4		●	●	●	●											
25	0	28	+0.035	0.8	0.4		●	●	●	●											
28		32		0.8	0.4		●	●	●	●											
30		34		1.0	0.6		●	●	●	●	●										
32		36		1.0	0.6		●	●	●	●	●	●									
35		39	+0.085	1.0	0.6		●	●	●	●	●	●									
40	+0.062	44	+0.045	1.0	0.6			●	●	●	●	●	●								
45	0	50		1.2	0.8				●	●	●	●	●	●							
50		55		1.2	0.8				●	●	●	●	●	●	●						
55		60		1.2	0.8				●	●	●	●	●	●	●	●					
60		65		1.2	0.8					●	●	●	●	●	●	●	●				
65	+0.074	70	+0.100	1.2	0.8					●	●	●	●	●	●	●	●				
70	0	75	+0.055	1.2	0.8					●	●	●	●	●	●	●	●	●			
75		80		1.2	0.8					●	●	●	●	●	●	●	●	●			
80		85		1.4	0.8					●	●	●	●	●	●	●	●	●			
85		90		1.4	0.8					●	●	●	●	●	●	●	●	●			
90		95		1.4	0.8					●	●	●	●	●	●	●	●	●	●		
95		100		1.4	0.8						●	●	●	●	●	●	●	●	●	●	
100	+0.087	105	+0.120	1.4	0.8							●	●	●	●	●	●	●	●	●	
105	0	110	+0.070	1.4	0.8								●	●	●	●	●	●	●	●	
110		115		1.4	0.8									●	●	●	●	●	●	●	
115		120		1.4	0.8										●	●	●	●	●	●	
120		125		1.4	0.8											●	●	●	●	●	
125		130		1.4	0.8												●	●	●	●	
130		135		1.4	0.8													●	●	●	
135		140		1.4	0.8														●	●	
140	+0.100	145	+0.170	1.4	0.8															●	
145	0	150	+0.100	1.4	0.8															●	
150		155		1.4	0.8															●	
155		160		1.4	0.8															●	
160		165		1.4	0.8															●	

FB 青铜卷制翻边轴套
FB Bronze Wrapped Flange Bushing



单位Unit: mm

压入座孔后的 内径 I.D. after fixed		外径 O.D.		F	f1	f2	L_{-0.40}^0												
							15	20	25	30	35	40	50	60	70	80	90		
25	+0.052 0	28	+0.075 +0.035	35	0.8	0.4	●	●	●										
30		34		45	1.0	0.6		●	●	●									
35		39		50	1.0	0.6		●	●	●	●								
40	+0.052 0	44	+0.085 +0.045	55	1.0	0.6			●	●	●	●							
45		50		60	1.2	0.8				●	●	●	●						
50		55		65	1.2	0.8				●	●	●	●						
55		60		70	1.2	0.8				●	●	●	●						
60		65		75	1.2	0.8				●	●	●	●	●					
65	+0.074 0	70	+0.100 +0.055	80	1.2	0.8			●	●	●	●	●	●					
70		75		85	1.2	0.8					●	●	●	●	●				
75		80		90	1.2	0.8						●	●	●	●	●			
80		85		100	1.4	0.8						●	●	●	●	●	●		
90		95		110	1.4	0.8							●	●	●	●	●	●	●
100	+0.087 0	105	+0.120 +0.070	120	1.4	0.8								●	●	●	●	●	●
110		115		130	1.4	0.8									●	●	●	●	●
120		125		140	1.4	0.8										●	●	●	●
130		135		155	1.4	0.8											●	●	●
140		145		165	1.4	0.8												●	●
150	+0.100 0	155	+0.170 +0.100	180	1.4	0.8													●
160		165		190	1.4	0.8													●
170		175		200	1.4	0.8													●
180		185		215	1.4	0.8													●
190		195		225	1.4	0.8													●
200	+0.115 0	205	0.210 0.130	235	1.4	0.8													●
225		230		260	1.4	0.8													●
250		255		290	1.4	0.8													●
265		270		305	1.4	0.8													●
285	+0.130 0	290	+0.260 +0.170	325	1.4	0.8													●
300		305		340	1.4	0.8													●